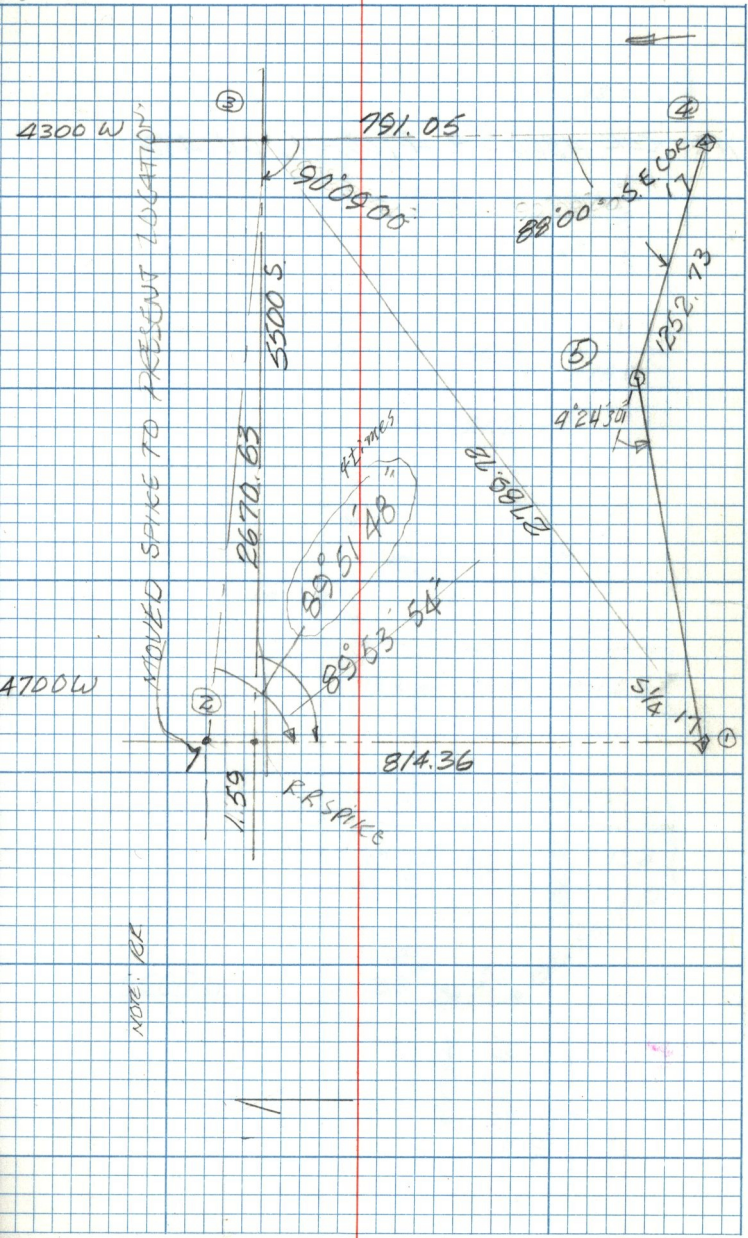


5500 S -

3 FEB 81
J. LAKNER
IN HOLMES
& WILKES



RR SPIKE

MOVED SPIKE TO PRESENT LOCATION

RR SPIKE

RR SPIKE

4300 W

4700 W

3

4

5

2

791.05

5500.5

6670.63

814.36

1.59

89°51'48"

89°53'54"

RR SPIKE

RR SPIKE

90°09'00"

88°00' SE CODE 17

5500.5

4°24'30"

2789.78

5/4 17